

# HQ Series

## Highest Performance RFI Filters for Medical Equipment



UL Recognized  
CSA Certified  
VDE Approved

### HQ Series

HQ series power line filters provide the highest available common-mode and differential-mode attenuation to RFI noise in the frequency range from 10kHz to 30MHz, for IEC601 and UL544 patient-connected equipment, as well as all other electronic equipment that cannot tolerate any leakage current.

They are a size- and cost-effective solution to the problem of meeting both medical leakage current limits and conducted emissions limits in equipment with high noise sources (such as switching power supplies). HQ series filters can ensure compliance to the following Conducted Emissions standards:

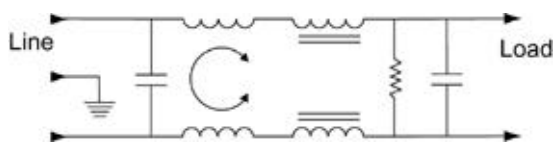
- European Normalized Standards based on EN55022, Level B
- FCC Part 15, Computing Devices, Class B.
- FCC Part 18, ISMEquipment, Industrial and Consumer.

They also provide the highest available susceptibility protection to medical equipment, permitting error-free operation in noisy environments, and enabling compliance to IEC801-6 and the FDA guidelines.

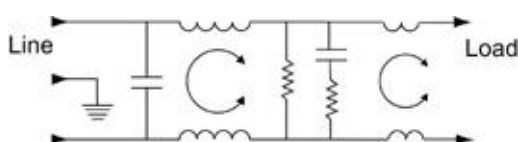
For more information on UL544, see Appendix C.

### Electrical Schematics

#### 3 Amp Models



#### 6 Amp Models



Resistor location for reference only.



### Specifications

Maximum leakage current, each  
line-to-ground @ 120 VAC 60 Hz: 2µA  
@ 250 VAC 50 Hz: 5µA

Hipot rating (one minute):  
line-to-ground 1500 VAC  
line-to-line 1450 VDC

Operating frequency: 50/60 Hz

Rated voltage: 120/250 VAC

Rated current:	@120 VAC	@ 250 VAC
3EHQ	3A	2A
6EHQ	6A	5A

Maximum rated current peaks:

3EHQ	10A
6EHQ	18A

#### Minimum insertion loss in dB:

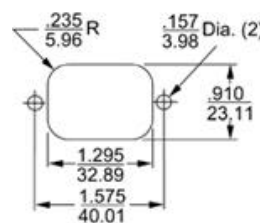
Line-to-ground in 50 ohm circuit

Current Rating	Frequency-MHz											
	.01	.02	.05	.15	.5	1	2	5	7	10	20	30
3A	19	24	32	44	44	40	38	28	25	22	13	10
6A	24	29	39	42	28	35	36	30	30	24	16	15

Line-to-line in 50 ohm circuit

Current Rating	Frequency-MHz											
	.01	.02	.05	.15	.5	1	2	5	7	10	20	30
3A	1	18	43	68	75	75	72	70	66	65	60	60
6A	6	10	43	70	75	75	75	65	50	55	50	40

### Recommended Panel Cutout (Q8-Q8M)



Tolerance : ±  $\frac{.005}{0.13}$

Panel Cutout (Back mount)

